



Performance Qualification

• *Injector Carry Over*

• *Instruments and Fluidics*

<i>Instrument Name</i>	<i>Model</i>	<i>Supplier's Name</i>	<i>Serial Number</i>
Pump	G1311	Thermo Scientific	DE91608906
Autosampler	G1367	Thermo Scientific	DE12801173
Column Oven	Other	Thermo Scientific	not available
UV Detector	G1315	Thermo Scientific	DE91608491
Chromeleon Datasystem	V. 6.80 SR16 Build 5387	Thermo Scientific	1904

<i>Accessories</i>	<i>Description</i>
Back Pressure Device	Capillary (L:15 m; ID:0,18 mm)
Sample 2	Caffeine in Water 10 µg/ml
Sample 7	Caffeine in Water 2000 µg/ml
Sample 8	Water (HPLC-Grade)
Solvent A	Water (HPLC-Grade)

• *Additional Information*

Customer: Customer's Name
 Operator: Operator's Name
 Operator's Jobtitle
 Execution Date: 2026-avr.-02
 Next Qualification: 2026-oct.

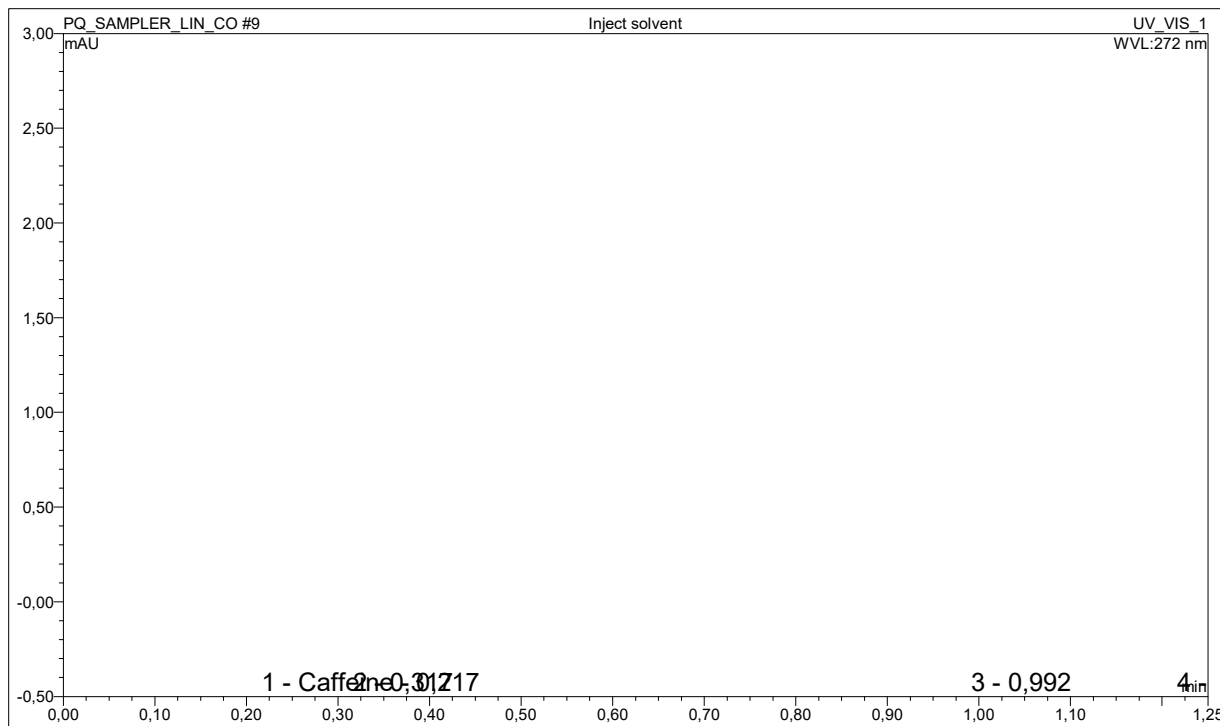
• *Limits, Values and Test Results*

	<i>Limit</i>	<i>Observed Value</i>	<i>Result</i>
Carry Over (Area)	<= 0,200 %	< 0,005 %	Test passed

• *Signatures*

	<i>Signature</i>	<i>Date</i>
Submitter / Operator:		
Reviewer:		
Approver (e-sig. only):		

• Chromatogram for Carry Over Test



• Data for Carry Over Test

Sample Name	Ret.Time min Caffeine UV_VIS_1	Area mAU*min Caffeine UV_VIS_1
Inject solvent_Reference	0,23	0,039
Carry over_Reference	0,33	9,581
Carry over	0,33	415,842
Inject solvent	0,22	0,013
Carry over:		< 0,005 %
Limit:		<= 0,200 %
Result:		ok