



## Performance Qualification

### • *Injector Carry Over*

#### • *Instruments and Fluidics*

<i>Instrument Name</i>	<i>Model</i>	<i>Supplier's Name</i>	<i>Serial Number</i>
Pump	G1312	Thermo Scientific	DE63055928
<b>Autosampler</b>	<b>G1367</b>	<b>Thermo Scientific</b>	<b>DE64556796</b>
Column Oven	Other	Thermo Scientific	not available
UV Detector	G1315	Thermo Scientific	DEAA202921
Chromeleon Datasystem	V. 6.80 SR16 Build 5387	Thermo Scientific	1904

<i>Accessories</i>	<i>Description</i>
Back Pressure Device	Capillary (L:15 m; ID:0,18 mm)
Sample 2	Caffeine in Water 10 µg/ml
Sample 7	Caffeine in Water 2000 µg/ml
Sample 8	Water (HPLC-Grade)
Solvent A	Water (HPLC-Grade)

#### • *Additional Information*

Customer: Customer's Name  
 Operator: Operator's Name  
 Operator's Jobtitle

Execution Date: 2026-mars-11  
 Next Qualification: 2026-sept.

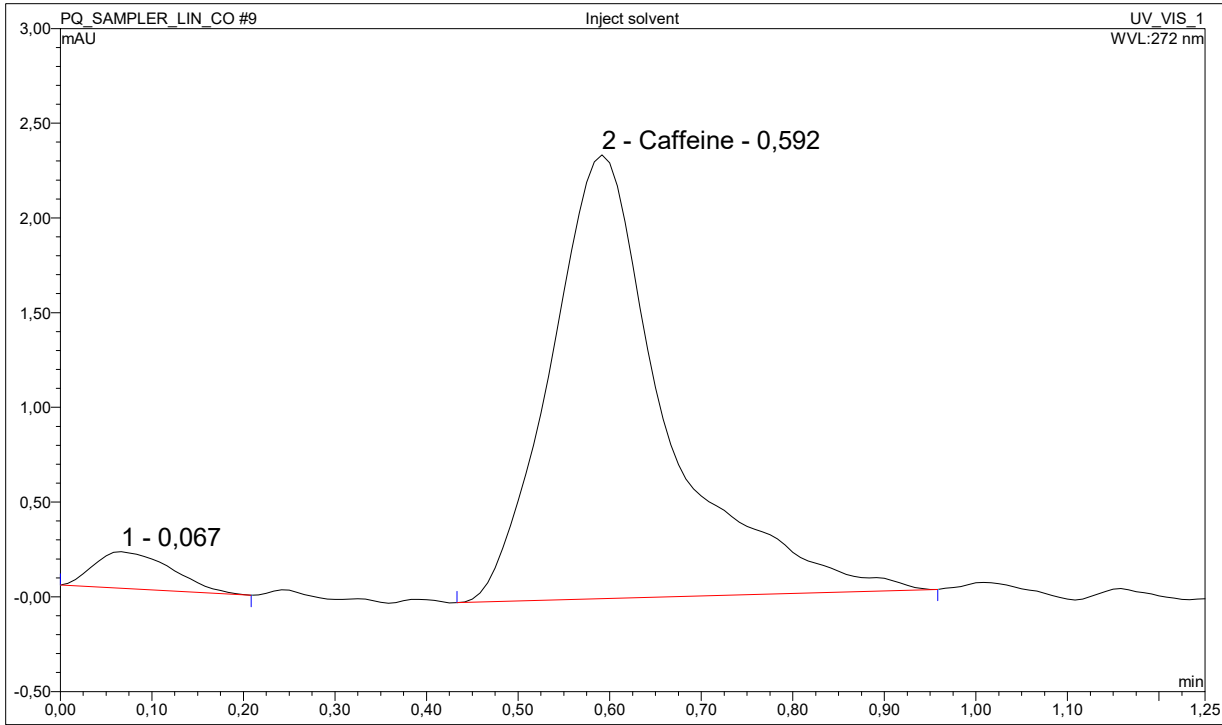
#### • *Limits, Values and Test Results*

	<i>Limit</i>	<i>Observed Value</i>	<i>Result</i>
Carry Over (Area)	<= 0,200 %	< 0,005 %	Test passed

#### • *Signatures*

	<i>Signature</i>	<i>Date</i>
Submitter / Operator:		
Reviewer:		
Approver (e-sig. only):		

• **Chromatogram for Carry Over Test**



• **Data for Carry Over Test**

<b>Sample Name</b>	<b>Ret.Time min Caffeine UV_VIS_1</b>	<b>Area mAU*min Caffeine UV_VIS_1</b>
Inject solvent_Reference	0,59	0,507
Carry over_Reference	0,59	10,334
Carry over	0,56	556,161
Inject solvent	0,59	0,343
<b>Carry over:</b>		<b>&lt; 0,005 %</b>
<b>Limit:</b>		<b>&lt;= 0,200 %</b>
<b>Result:</b>		<b>ok</b>