



## Performance Qualification

### • *Injector Linearity*

#### • *Instruments and Fluidics*

<i>Instrument Name</i>	<i>Model</i>	<i>Supplier's Name</i>	<i>Serial Number</i>
Pump	G1312	Thermo Scientific	DE63055928
<b>Autosampler</b>	<b>G1367</b>	<b>Thermo Scientific</b>	<b>DE64556796</b>
Column Oven	Other	Thermo Scientific	not available
UV Detector	G1315	Thermo Scientific	DEAA202921
Chromeleon Datasystem	V. 6.80 SR16 Build 5387	Thermo Scientific	1904

<i>Accessories</i>	<i>Description</i>
Back Pressure Device	Capillary (L:15 m; ID:0,18 mm)
Sample 2	Caffeine in Water 10 µg/ml
Solvent A	Water (HPLC-Grade)

#### • *Additional Information*

Customer: Customer's Name  
 Operator: Operator's Name  
 Operator's Jobtitle  
 Execution Date: 2026-mars-11  
 Next Qualification: 2026-sept.

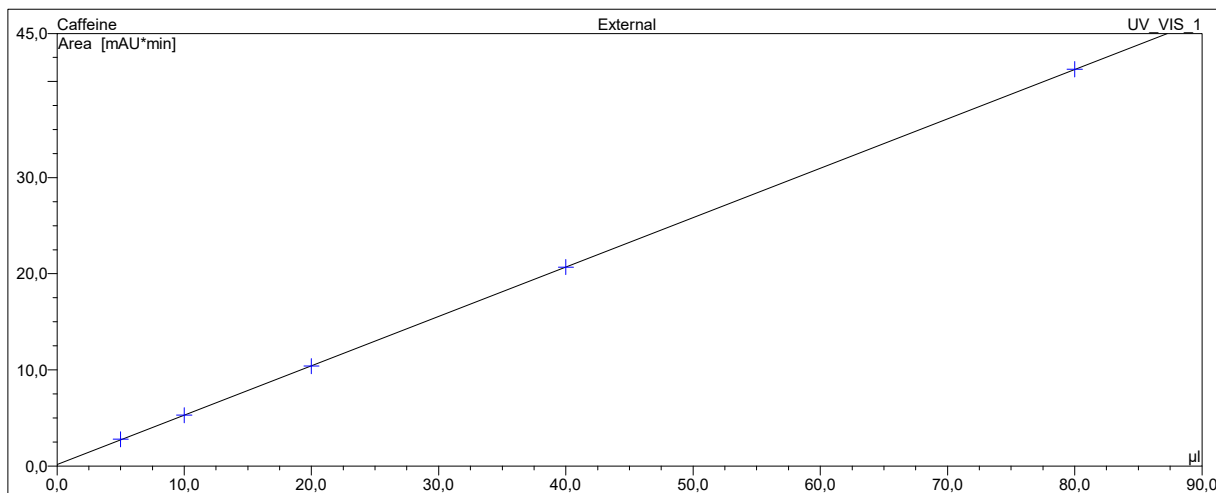
#### • *Limits, Values and Test Results*

	<i>Limit</i>	<i>Observed Value</i>	<i>Result</i>
Injector Linearity - Corr.	>= 99,90000 %	99,99968 %	Test passed
Injector Linearity	<= 1,000 % RSD	0,283 % RSD	Test passed

#### • *Signatures*

	<i>Signature</i>	<i>Date</i>
Submitter / Operator:		
Reviewer:		
Approver (e-sig. only):		

• **Calibration Curve**



• **Data for Injector Linearity Test**

Sample Name	Ret. Time min Caffeine UV_VIS_1	Inj. Vol. µl	Area mAU*min Caffeine UV_VIS_1
Injector linearity_1	0,58	5,0	2,780
Injector linearity_2	0,58	10,0	5,280
Injector linearity_3	0,59	20,0	10,384
Injector linearity_4	0,60	40,0	20,688
Injector linearity_5	0,62	80,0	41,277

Cal. Type UV_VIS_1	Number of Points UV_VIS_1	Offset UV_VIS_1	Slope UV_VIS_1
L Off	5	0,153	0,514

	Correlation Coefficient	RSD
	99,99968 %	0,283 %
<b>Limit:</b>	<b>&gt;= 99,90000 %</b>	<b>&lt;= 1,000 %</b>
<b>Result:</b>	<b>ok</b>	<b>ok</b>